

GREAT LAKES[®]

BREWING CO

NOSFERATU IMPERIAL RED ALE



Don't be afraid of things that go hop in the night! Rich roasted malt flavors haunt the shadows of our Imperial Red Ale's bitter teeth.

AVAILABILITY: August

PACKAGING: 4-Pack, Draft

FLAVOR: Ruby red in color with a toasty malt body lurking beneath a stunning hop bite

ABV: 8.0% **IBU:** 70

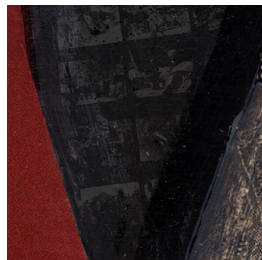
PAIRS WITH: Root vegetables, red meats, and dark cellars

INGREDIENTS:

MALTS: Harrington 2-Row Base Malt, Crystal 77, Special Roast

HOPS: Simcoe, Cascade

ON THE LABEL:



Taken with their Imperial Red Ale's claret color, our brewers conjured a frighteningly good name for this new creation: Nosferatu. Let your eyes creep across our label artwork, and you'll unearth film negatives referencing the classic German horror movie that inspired our spookiest brew.