

# GREAT LAKES<sup>®</sup> BREWING CO

## OHIO CITY OATMEAL STOUT



Dark and roasty yet light and smooth as a fresh coat of snow, our Oatmeal Stout will kick your cabin fever and inspire you to toss another log on the fire.

**AVAILABILITY:** October

**PACKAGING:** 6-Pack, 12-Pack, Draft

**FLAVOR:** Oh, what fun it is to ride through a flurry of flaked oats o'er a field of rich roasted malt flavors!

**ABV:** 5.4% **IBU:** 25

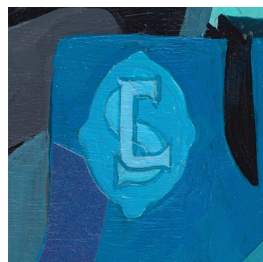
**PAIRS WITH:** Chocolate desserts, aged cheddar, and a flannel blanket

### INGREDIENTS:

**MALTS:** Harrington 2-Row Base Malt, Crystal 77, Chocolate, Black, Flaked Oats

**HOPS:** Willamette

### ON THE LABEL:



Hold your horses and look at the carriage on our label! You'll find the initials "LS", a tribute to Cleveland's historic Leonard Schlather Brewery. Long after the Schlather Brewery doors closed for good, a horse of a different color expanded its production facility into the former site of Schlather's stables. Go ahead and guess who—we'll spare you another bad horse pun.